

Solomon R. Guggenheim Museum Archives A0071 Panza Collection Initiative (PCI) records

Please refer to the online finding aid (<https://www.guggenheim.org/finding-aids/collection/a0071>) or contact libraryandarchives@guggenheim.org for more information. All images are from the Digital Asset Management System. For museum employees, thumbnails are hyperlinked to the database. Click on them to be taken directly to the file in the DAM.

Relevant images may be found in other series:

Series 1. Advisory Committee Meetings, 2011-2017

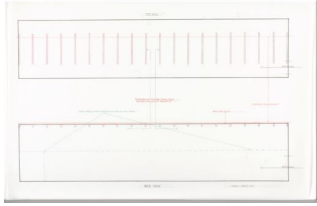
- Installation Views and Event Photographs
Numerous artworks or representative parts of artworks were assembled and displayed along with relevant documentation for each of the five two-day Advisory Committee meetings, which involved discussion and debate among a group of conservators, curators, and art historians.

Series 2. Object Lessons: The Panza Collection Initiative Symposium, 2019

- Installation Views
Images from the presentation of related art, documents, and working drawings from the Panza Collection, including works by Dan Flavin, Donald Judd, Robert Morris, and Bruce Nauman.

Series 3-10: Subseries: Artworks

- Artwork History
Detailed, illustrated account of the work's medium, production, display, provenance, and exhibition history. A selection of full-length artwork histories are available as digitalized content for each PCI case study, all other documents are available upon request.
- Artwork Views
Research material consulted by PCI team including past exhibition views, drawings, related artworks not in the Guggenheim collection, and other related documents. Detailed contextual information about these records can be found in the artwork history documents.
- Components Reclassified to Archives
In 2017 the PCI re-catalogued artwork related materials including drawings and components. These materials were reclassified and transferred to the archives. Detailed contextual information about these records can be found in the artwork history documents. Some images, particularly photographs, are duplicated under "artwork views."
- Drawings in the Guggenheim Collection
Drawings related to artwork in Guggenheim collection. As part of broader re-cataloging of drawings and other components undertaken by the PCI in 2017, these drawings were assigned their own object record in the museum's collection database.
- Paper-based Artwork Components
Documents that continue to be maintained in the museum's artwork storage and catalogued in the museum's collection database. These documents include certificates of authenticity, technical drawings, and other documents that originated with the artists. Some of this material is restricted.
- Technical Documentation
Images taken throughout the PCI project during in-depth examination of extant artworks. In most cases, detailed contextual information about these images can be found in the artwork history documents.



Description: Plan by Irwin sent to Panza in November 1973 showing his conception for a scrim installation at Varese, with scrim hung horizontally, parallel to ceiling, and with fluorescent lights above it. (This is ultimately abandoned in favor of the vertical scrim that still stands in this space: Varese scrim. But Panza subsequently identified this as a separate work that he owned, catalogued as Varese horizontal scrim, and it was accessioned as such by SRGM.) This was previously cataloged as component 91.4056.instructions.1. In 2015-17, as part of broader reorganization of drawings and other components undertaken by the Panza Collection Initiative, this was assigned its own object record and linked to DC91.4056 (Decommissioned artwork) with a parent-child relationship in TMS (ratified by A&M Committee in 2018).

New object number: 91.4158

Robert Irwin
Untitled (drawing for Varese Horizontal Scrim)
1973

Ink on paper
Solomon R. Guggenheim Museum, New York
Panza Collection, Gift, 1991
91.4158

© [current year] Robert Irwin / Artists Rights Society (ARS), New York

KEYWORDS: work on paper

ARTIST NAME: Robert Irwin

TITLE: Untitled (drawing for Varese Scrim)

DATE OF ARTWORK | EXHIBITION | EVENT: 1973

ACCESSION NUMBER | UNIQUE IDENTIFIER: 91.4158

DEPARTMENT | PROJECT | COLLECTION: Panza Collection

PHOTOGRAPHER | CREATOR OF DIGITAL ASSET: Kristopher McKay

Author's Position: SRGM Photographer

Credit: © [current year] Robert Irwin / Artists Rights Society (ARS), New York